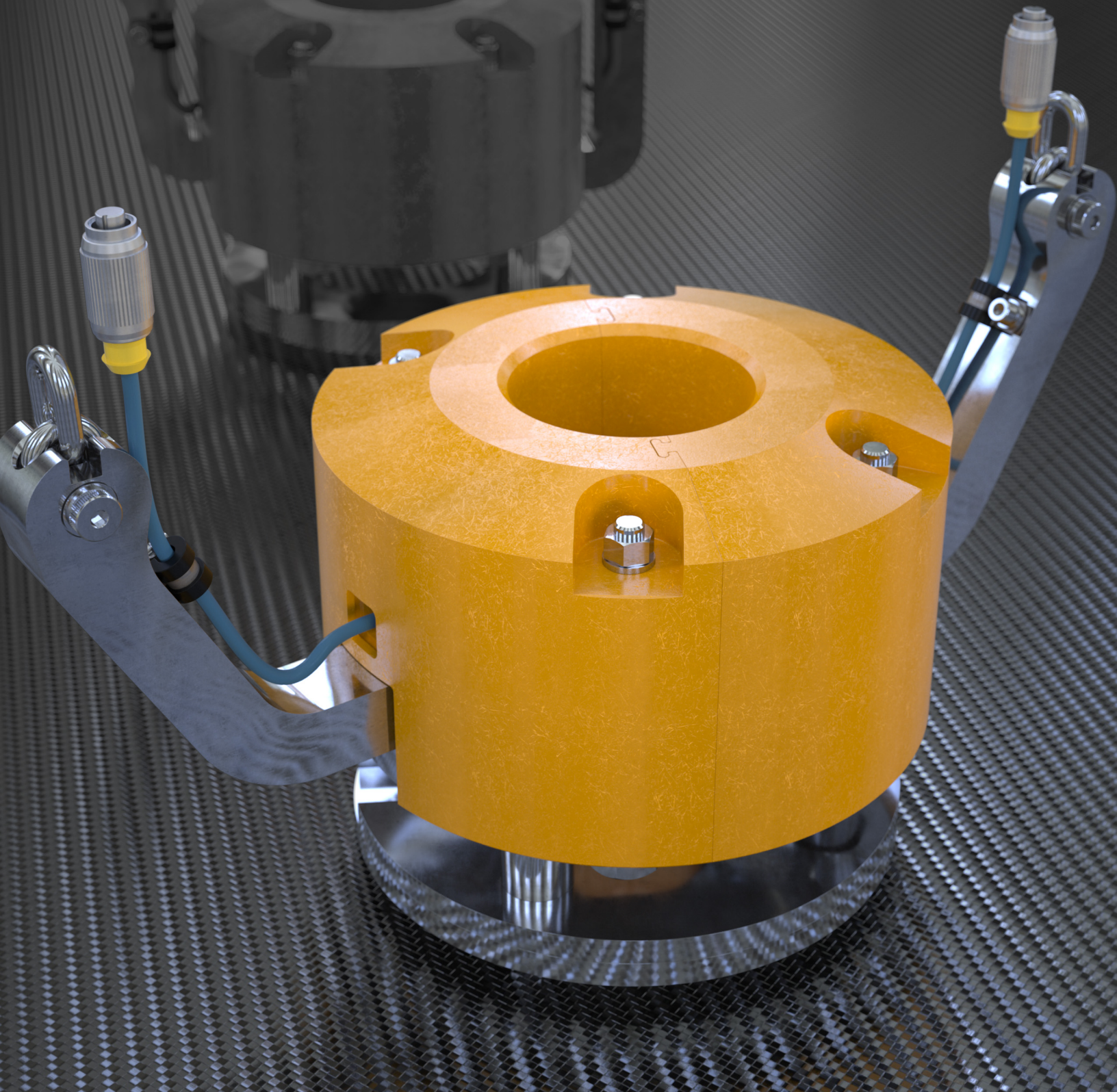


LETOURNEAU

A Keppel Company

A2B



Anti-2-Block

Design

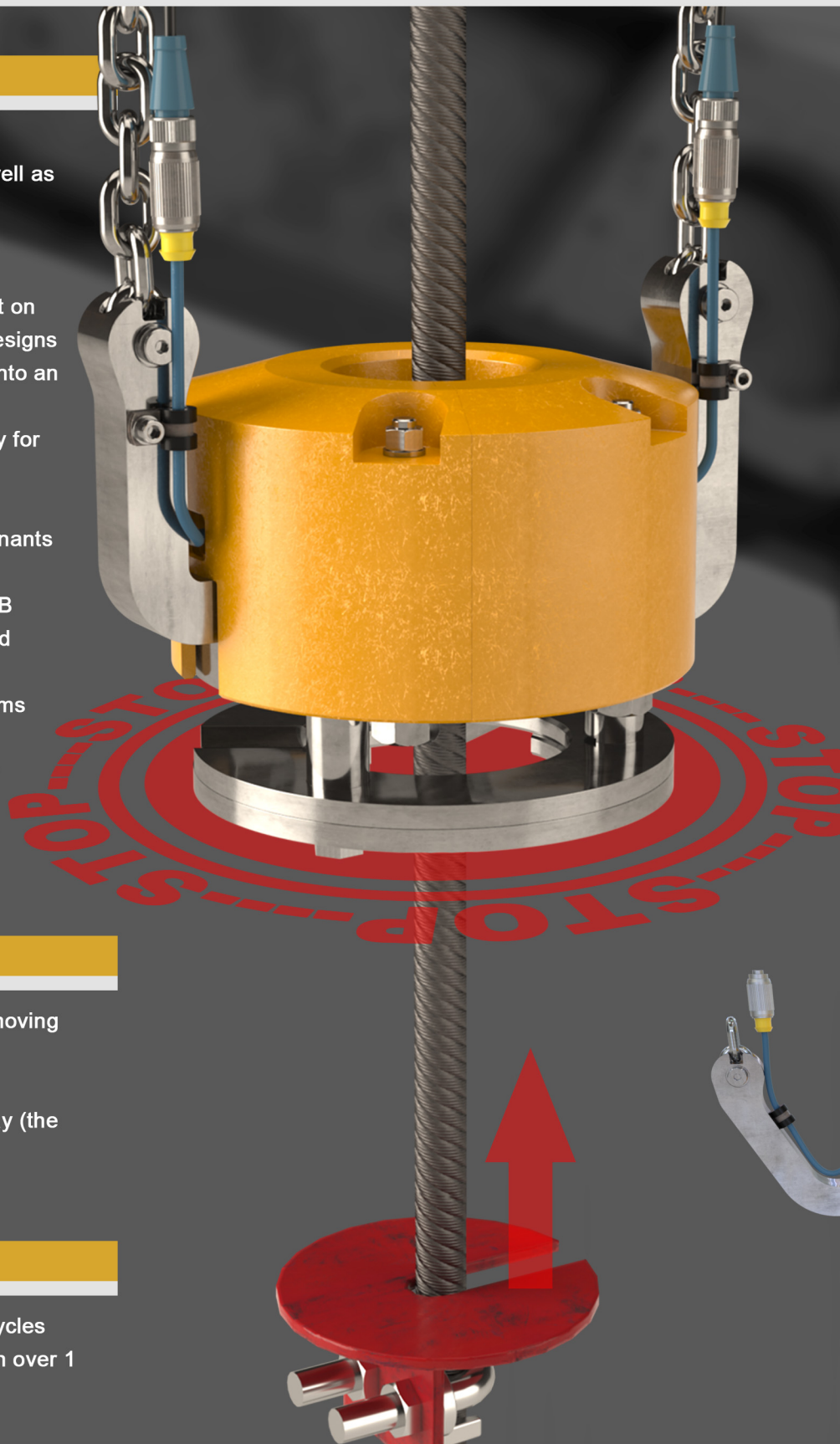
- Modular Design - Can be installed on all LeTourneau cranes (AS, VS and SS), as well as lifting devices and cranes from other manufacturers
- Design life - 10+ years
- Activation of limit sensors is not dependent on chain length or weight, unlike other A2B designs
- NAMUR proximity sensors are integrated into an easily replaceable cap
- Colored sensing cap provides high visibility for crane operators
- Sensing cap design protects internal components from water and other contaminants without the use of seals or O-rings
- Dual chain suspension system ensures A2B assembly is highly resistant to spinning and being dragged by wire rope
- Chain connection is integrated into A2B arms and eliminates the potential for snagging
- Chain size used allows for significant wear before the need to replace it arises

Assembly

- A2B assembly can be installed without removing block and disconnecting the wire rope
- Intrinsically-safe boom tip installation
- Simple assembly, only fits together one way (the correct way)

Statistics

- Zero missed activations in over 1 million cycles
- Less than 0.02% false positive activation in over 1 million cycles

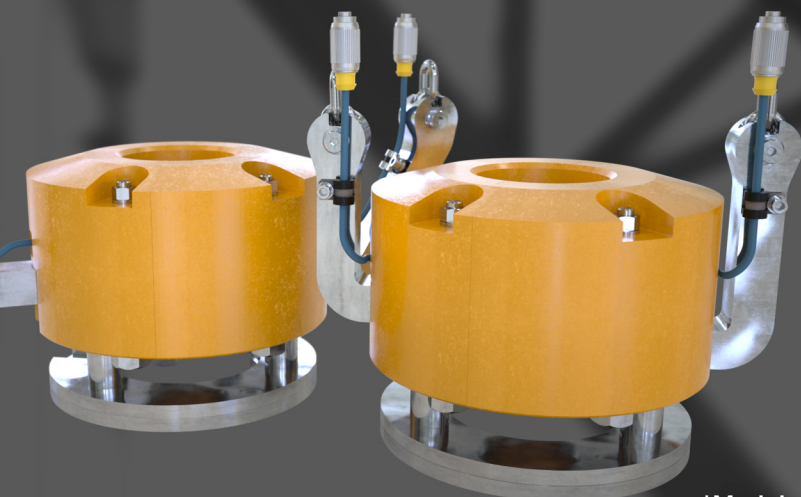
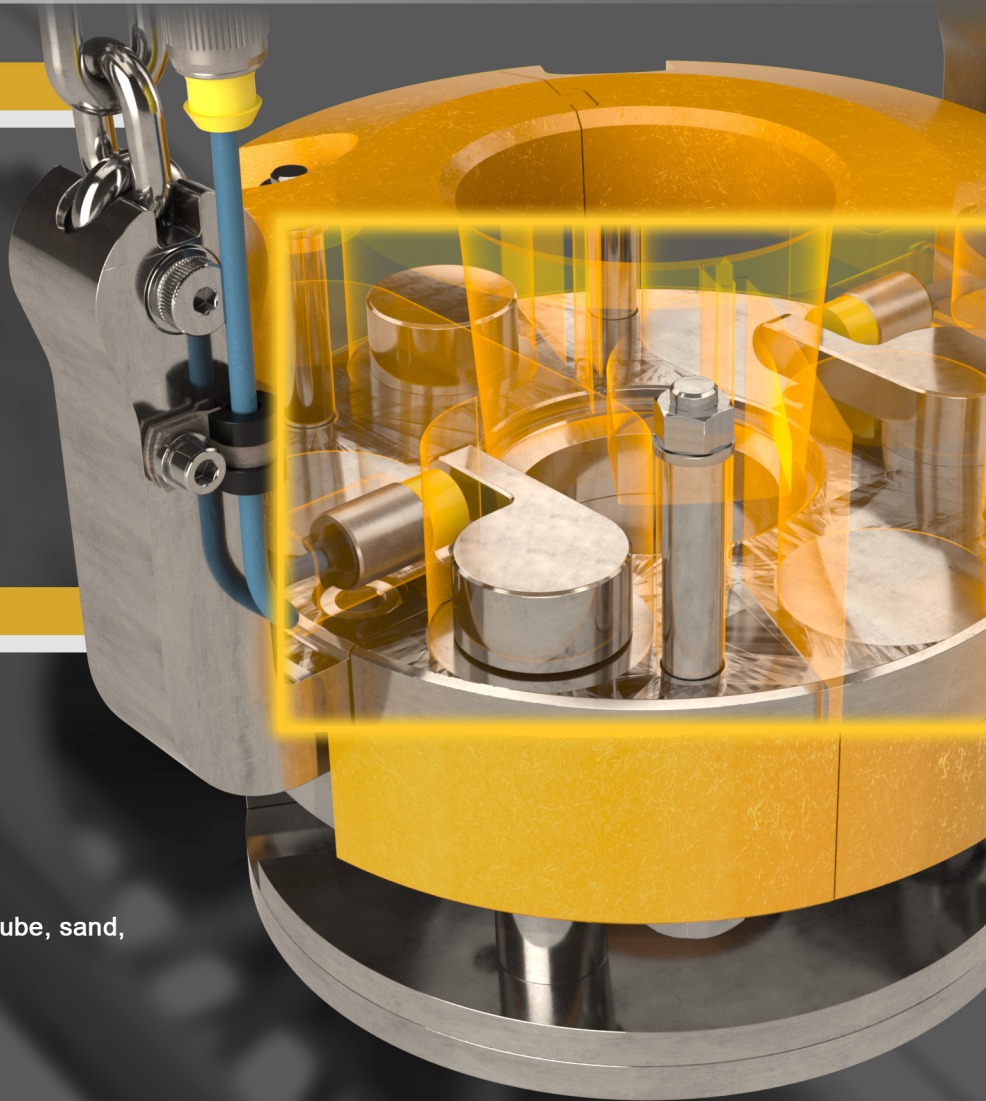


Redundancy

- The A2B assembly interlocks onto the wire rope with multiple fasteners and cannot come off of the wire rope if the chains break and if several fasteners are removed
- Dual NAMUR proximity sensors
- Dual retention on all fasteners and shackles

Maintenance

- Very low maintenance requirements
- No springs
- No seals
- No lubrication
- No precision wear points
- No mechanical switches
- Highly resistant to build-up from wire rope lube, sand, water, ice and other contaminants



Materials

- All Marine Grade Stainless Steel construction
- Marine Grade Stainless Steel chains
- All forged materials, no castings

*Modular design allows for multiple mounting configurations

LETOURNEAU

A Keppel Company

Keppel LeTourneau Singapore Pte Ltd

Head Office

No. 50 Gul Road
Singapore 629351

Tel:+65 6863 7200 Fax: +65 6261 7719

Email: SpareParts.sg@keppelletourneau.com
Service.sg@keppelletourneau.com

Contact Person: Winston Cheng, Commercial Manager

Keppel LeTourneau USA, Inc.

5656 N. Sam Houston Parkway East
Houston, Texas 77032
USA

Tel: (713)-835-1093 / (832)-838-5905 Ext 129

Email: SpareParts.usa@keppelletourneau.com
Service.usa@keppelletourneau.com
Engineering.usa@keppelletourneau.com

Contact Person: Jimmy McDermott, Sales Manager

Keppel LeTourneau Middle East FZE

Office No: LB16504
Jebel Ali
Dubai
United Arab Emirates

Tel:971 04 8860010 Fax: 971 4 8860012

Email: SpareParts.uae@keppelletourneau.com
Service.uae@keppelletourneau.com

Contact Person: Alex SIBIE, Sales Manager